

Combine Like Terms and Distributive Property Worksheet

WARM UP: SIMPLIFY EACH EXPRESSION

✓ 1) $12r + 5s - 7t + 11r + 9s - 4r$

✓ 4) $8y - 6(3y - 7)$

✓ 2) $-4(5a - 3b)$

✓ 5) $2(z + 3) + 3(5 - 3z)$

✓ 3) $5(7 + 3x) - 12$

✓ 6) $8x^2 - 7x + 4x^3 - 2 - 3x^2 + 9x - 4$

- 3: COMBINE LIKE TERM WORD PROBLEMS:

- ✓ 1) Bob mowed $(2x^2 + 5x - 3)$ yards on Monday, $(4x - 7)$ yards on Tuesday, and $(3x^2 + 10)$ yards on Wednesday.

a. How many yards did he mow in the three days?

b. If Bob mowed $14x^2 + 12x - 3$ yards total for the entire week, how many yards did he mow during the rest of the week?

- 2) Molly has $(4x + 10)$ dollars and Ron has $(20 - 5x)$ dollars.

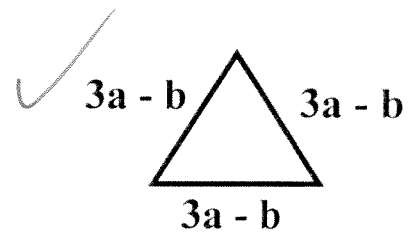
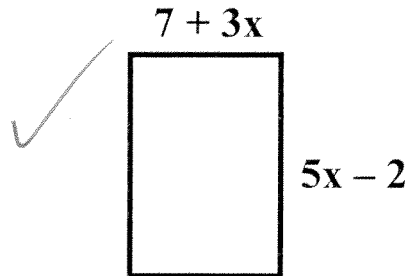
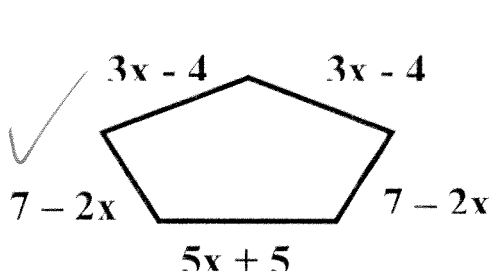
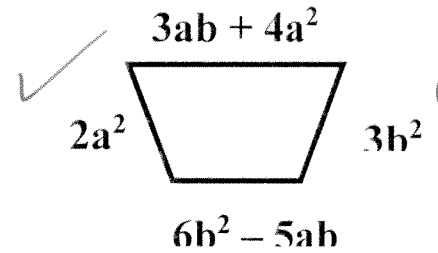
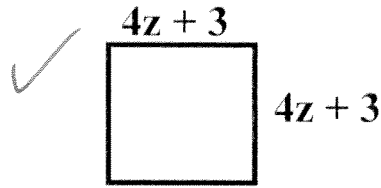
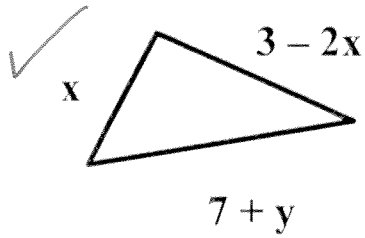
a. How much money do they have altogether?

b. How much more money does Molly have than Ron?

- ✓ 3) Ross has $(8x - 5)$ tickets for Chuck E Cheese. He is going to play today and wants to buy a prize that is $(15x + 1)$ tickets. How many tickets must he win to have enough tickets to buy the prize?

4) Find the perimeter of each of the shapes pictured below:

(Combine Like Terms of the sides)

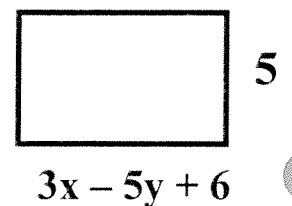


5) FIND THE AREA OF THE GIVEN SHAPES:

Equation #1: Area of Rectangle = Length * Width,

Equation #2: Area of Triangle = $\frac{1}{2}$ * Base * Height

- ✓ a. Find area of a rectangle with length of 5 and width of $3x - 5y + 6$.



- ✓ b. Find area of a rectangle with width of 7 and length of $6x - 7$